

Humane Happenings



Humane Society of Citrus County FLORIDA INC.

Volume 3, Issue 3

March 2009

National Poison Prevention Week - March 15-21



March 15-21 is National Poison Prevention Week, established by the ASPCA. It is important to stay informed about potential dangers to your pets.

There are many common plants that can make your pet violently ill and can sometimes cause death and it is important to keep these plants out of reach of your pets. Some of those plants are lilies, tulip/narcissus bulbs, azalea, oleander, cyclamen, chrysanthemum, English ivy and the peace lily.

Remember to keep your medications locked away where your pets cannot get to them. Insecticides can also be a problem for your pet, not only those meant for bugs and flies but also using the wrong flea and tick medication or using too much. Don't give your pets people food that can cause problems for your pets. Grapes, raisins, avocado and chocolate can cause gastrointestinal problems and can even result in the death of your pet. If you use rat or mouse bait, make sure you put it where your pets cannot reach it. Keep all yard insecticides, fertilizers and household chemicals out of reach of your pets. Remember too that while your friend is exploring the yard, poisonous frogs, spiders, scorpions or snakes could be lurking.

If you think your little, inquisitive friend has ingested any of these items, contact your vet immediately. If you know what your pet has ingested, make sure you make that information available to your vet. Keep those pets safe this summer!

Our Mission:

THE HUMANE SOCIETY OF CITRUS COUNTY FL INC IS A 501(C)3 CORPORATION DEDICATED TO THE PROTECTION OF ALL ANIMALS. IT IS OUR GOAL TO RESCUE AND FIND FOREVER HOMES FOR AS MANY ABANDONED, ABUSED PETS AS POSSIBLE AND TO TRY TO EDUCATE THE PUBLIC TO THE IMPORTANCE OF SPAY/NEUTER TO ALLEVIATE THE PROBLEM OF THE OVER-POPULATION OF UNWANTED, ABUSED, ABANDONED PETS..

INSIDE THIS ISSUE:

10 WARNING SIGNS OF DOG CANCER	2
PHOTOS ARE UP - TIME TO VOTE	2
EASY WAY TO HELP	2
HAPPY TAILS	3
BELLE NEEDS A SPONSOR	4
THANKS TO YOU	4
AM I ADOPTED?	5
LOOKING FOR FOREVER HOMES	5
UPCOMING EVENTS	6



10 WARNING SIGNS

OF DOG CANCER!

- ◆ LUMP OR GROWTH THAT GROWS QUICKLY
 - ◆ A FIRM MASS
 - ◆ A MASS THAT SEEMS ATTACHED TO THE UNDERLYING TISSUE
 - ◆ A PIGMENTED MASS
 - ◆ A MASS THAT CHANGES ITS CHARACTER
 - ◆ WEIGHT LOSS
 - ◆ LOSS OF APPETITE
 - ◆ REPEATED VOMITING, ESPECIALLY IN OLDER DOGS
 - ◆ COUGHING
 - ◆ BLOODY URINE
- CANCER CAN AFFECT ALMOST ANY ORGAN IN THE BODY. LAMENESS COULD BE AN INDICATION OF BONE CANCER. VOMITING, DIARRHEA AND BLOODY STOOL COULD BE A SIGN OF INTESTINAL CANCER. IF YOUR DOG EXHIBITS ANY UNUSUAL SIGNS, CONSULT YOUR VETERINARIAN IMMEDIATELY.

Humane Happenings

ANNUAL PET PHOTO CONTEST

TIME TO VOTE!

All the photos are in and they are beautiful! Please visit our site at www.humanesocietycitrus.com/ and vote for your favorite photo. Everyone believes their pet is the best pet ever. Click on a photo to read the reason why the pet's people feel that way about theirs.

By voting for your favorite photo, you are helping the Humane Society of Citrus County keep doing what we do, rescue and re-home pets into a loving forever home. Votes are only \$1 each, with a way to earn free votes. Help your favorite win a trophy and a gift basket worth over \$500.00.

~ ONE OUT OF 4 DOGS WILL GET CANCER ~

Dogs commonly get cancer. Cancer is a disease that is characterized by a group of cells that grow to invade and destroy adjacent tissues. It may also spread to distant areas through a process called metastasis.

Cancer can occur in the skin, under the skin and affect just about any location or organ in the body. There are also several types of cancer that is possible at each location. The signs of cancer vary with the location and type of cancer. The aggressiveness of the cancer will depend on the type of cancer, the location and the individual pet. (Pet Place)

WAYS YOU CAN HELP US CONTINUE TO FIND FOREVER HOMES FOR PETS!

Before heading out to the store, go to www.goodsearch.com and select the Humane Society of Citrus County as your favorite charity. You can shop online at Wal-Mart, Pet Smart, Barnes & Noble, Office Depot and many other stores and we receive a percent of the sale. Also, check out www.humanesocietycitrus.com and click on the Stuffed Adoptions link. Remember also to go to www.freekibble.com to help feed shelter animals.



SOME OF OUR HAPPY TAILS!



RIVER & NEW FAMILY



DEMI & NEW



NEHI & NEW MOM & DAD



CECIL & NEW FAMILY



LUCY & NEW MOM & DAD



QUANTUM & HONEY & NEW FAMILY



TJ MAX & NEW MOM & DAD



JULIA & NEW FAMILY



JULIA & NEW GIRL



TRINITY & NEW MOM & DAD



ABBY & NEW MOM & DAD



CICI & NEW MOM



AC & NEW MOM



FLOWER & NEW FAMILY



WICKER & NEW FAMILY



AURORA & NEW MOM

BELLE NEEDS A SPONSOR



Sweet old Belle was rescued from Animal Control in early 2008. In April 2008, we found what we thought was a really great home for Belle. Just 2 weeks ago, she was found wandering the

streets in Lecanto. Animal Control scanned her microchip and contacted us to go pick her up. Her previous owner had given her away and was not in a position, nor would we allow her to be returned.

Poor Belle was in terrible shape. Her fur was so matted, she needed to be shaved because the mats were cutting off the circulation to her feet and, since she was suppose to be on lifetime medications, there was no way of knowing when she was last medicated. She is now again on the road to recovery but the decision was made to make the kennel (and Lisa's home) her forever home.

Belle needs help. She needs someone who is willing and able to commit to her for the long term and support her monthly medications. She is an old girl who is in congestive heart failure and needs to take daily medications to sustain her life.

If you are in a position to help, please contact Lisa at the kennel and let her know. Come visit Belle at the kennel and let her know someone cares.

THANKS TO OUR FEBRUARY SUPPORTERS

- * Fred & Donna McEwen
- * Betty Lindskog
- * Charles & Rebecca Wagner
- * Genevieve Verdone
- * Nick & Roberta Lamparelli
- * Janet Bensinger
- * Don & Dorothy Brett
- * Jacqueline O'Grady
- * Wayne & Geraldine Gangler
- * Kay Balfour
- * Jack & Marilyn Berg
- * Julia VanBeck
- * Hazel Carlson
- * Sue Brascia
- * Julia VanBeck
- * Arthur Nichols
- * Lydia Peck
- * Progress Energy
- * Lance Smith
- * Unity Church
- * Uma & Alex Burgos

THANK
YOU! 

This Is Really Hard For Me To Ask!



Was I Adopted?

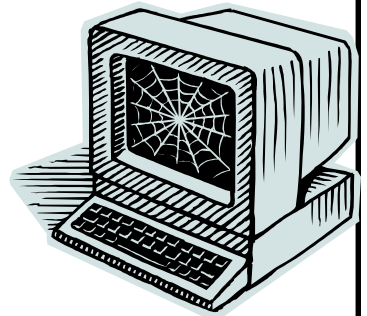
**Need a New Forever Friend?
Don't Buy While So Many Die!
Contact The Humane Society of Citrus County!**

**On The Web At:
www.humaneocietycitrus.com
352-341-2222**



Looking for a new forever friend? Go to our website and take a look at the many dogs we have available. You just might find a new forever friend! And you can tell him "Yes, you were adopted from the Humane Society of Citrus County!"

**WE'RE ON THE WEB AT:
www.humaneocietycitrus.com**



**IMPORTANT:
April - Human/ Animal Abuse Awareness Month**



Looking For Their Forever Homes



BUFFY



CLIPPER



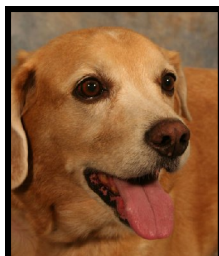
BECKY



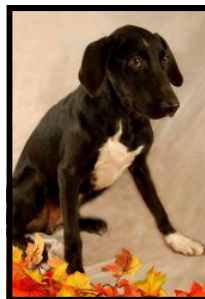
JO COCKER



PUDDER



SONNY



JORDAN



WRANGLER

The world is a dangerous place, not because of those who do evil but because of those who look on and do nothing.

Humane Society of Citrus County

751 S Smith Avenue
Inverness FL 34451
Phone: 352-341-2222
E-mail: bonniea15@yahoo.com



If you would prefer we e-mail your newsletter, please let us know.



PAWS-ITIVELY
PETS ADOPTION
CENTER

**NEXT GENERAL
MEETING:**

April 4, 2009 - 10:00
AM

New Members, Volunteers and guests are always welcome to join us at our monthly meetings. We are always looking for new ideas to help rescue more of the many pets who find our door. Please join us!

**Don't Buy Live
Bunnies!**

With Easter soon here, don't buy live bunnies. The cute, newness will wear off soon!

Instead, visit www.stuffedadoptio ns.com/?click=110 to get your adoptable Easter bunny. We receive a percent of your purchase.



THOUGHT FOR TODAY

"A cat is a puzzle for which there is no solution." ~ Hazel Nicholson



OUR LEGAL STATUS: Doc #745226 issued December 12, 1978 on file in Tallahassee. Registered with Florida Department of Agriculture & Consumer Affairs. Copy of the official registration and financial information may be obtained from the Division of Consumer Services by calling toll-free 800-435-7352 within the state. Registration does not imply endorsement, approval or recommendation by the State. All dues and contributions are tax exempt to the full extent allowed by law. Our registration number issued by Florida Department of Agriculture & Consumer Services is CH1815. 100% of all contributions are retained by Humane Society of Citrus County, FL, Inc. No percentage is retained by any professional solicitor.